



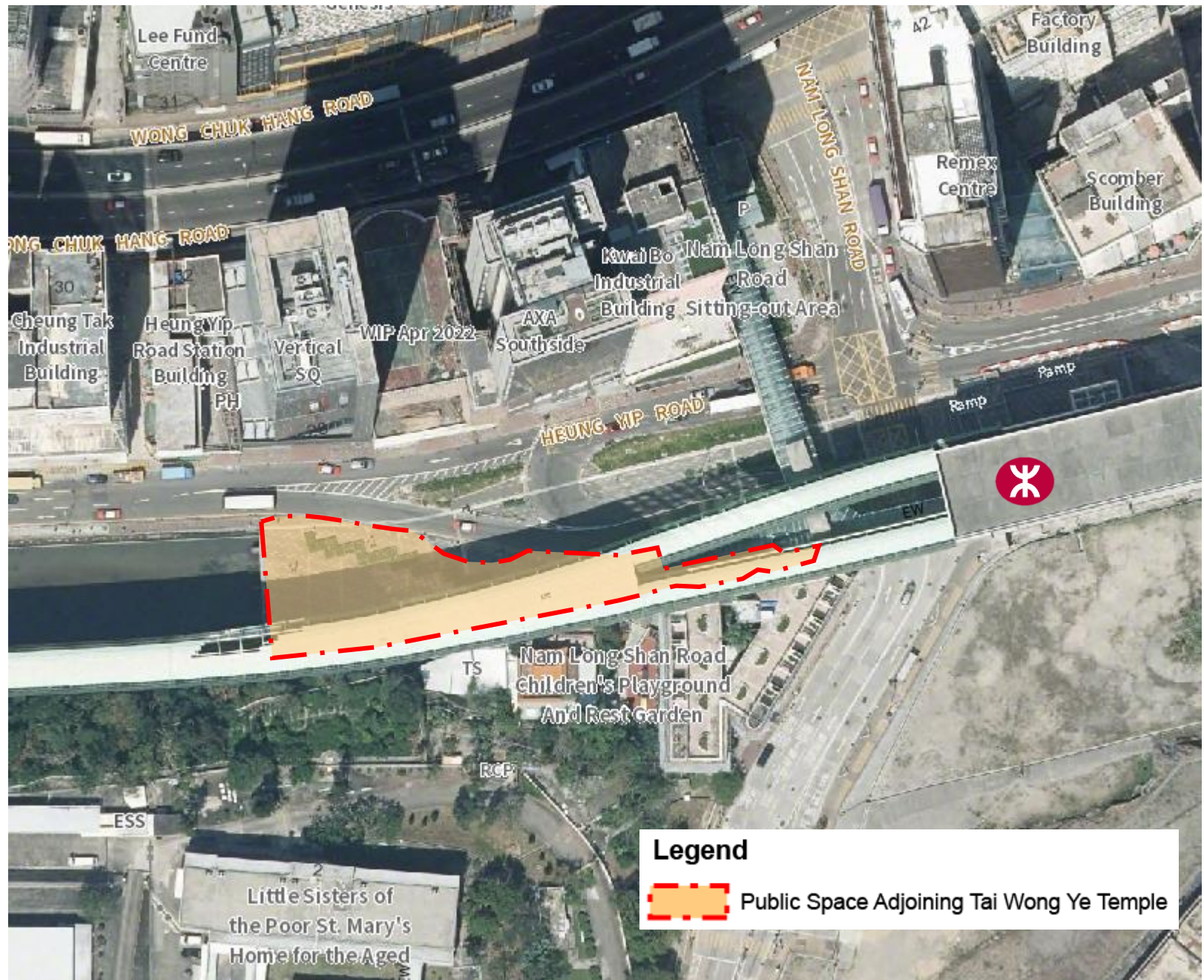
Reimagining Public Spaces in Hong Kong – Feasibility Study

Pilot Case on Public Space next to Tai Wong Ye Temple in Wong Chuk Hang

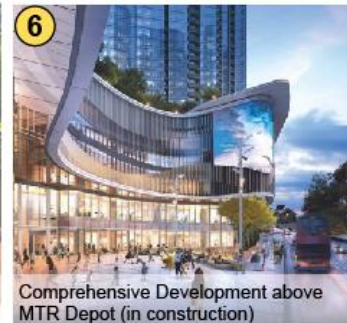
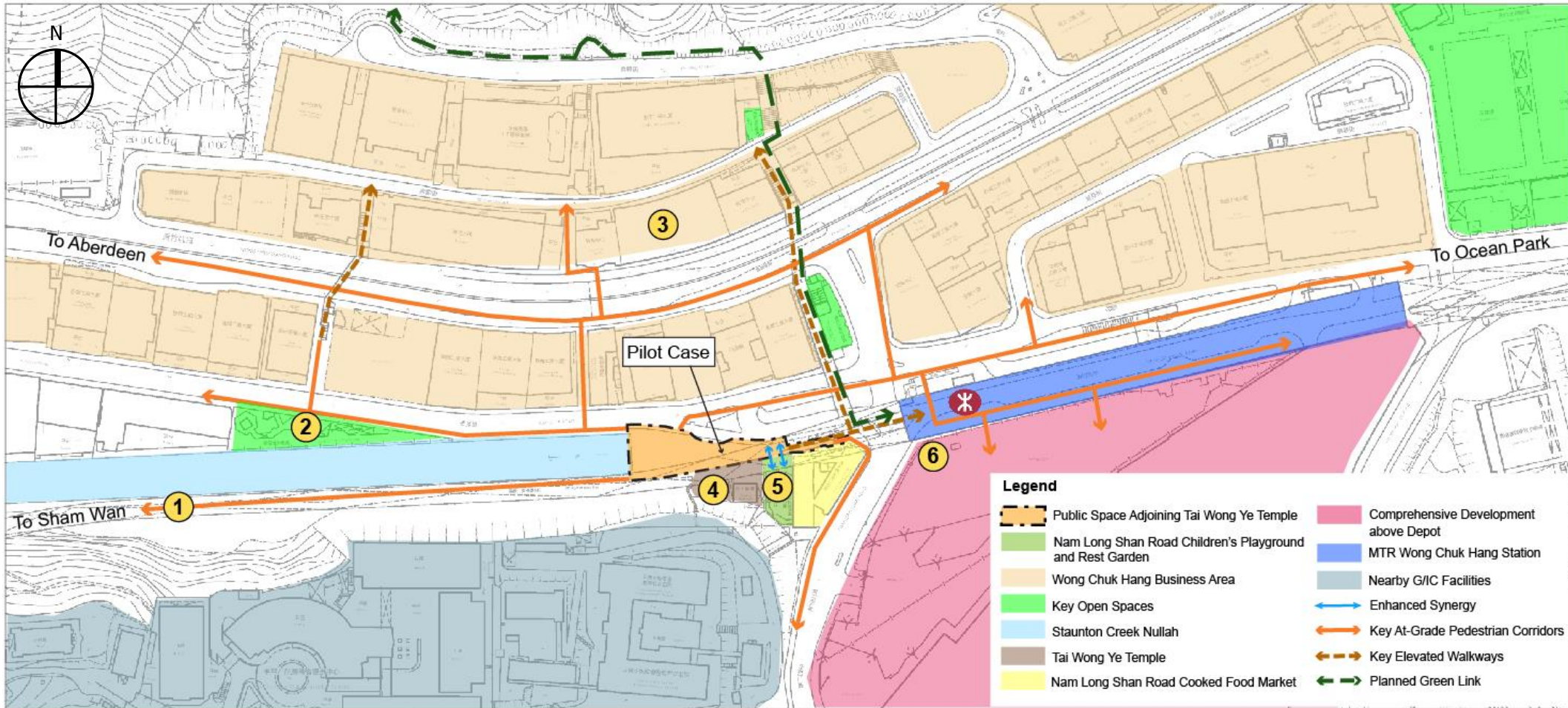
Pilot Case

Public Space next to Tai Wong Ye Temple in Wong Chuk Hang

- To demonstrate the enhancement to the public space for serving open space functions



Site Context of the Pilot Case

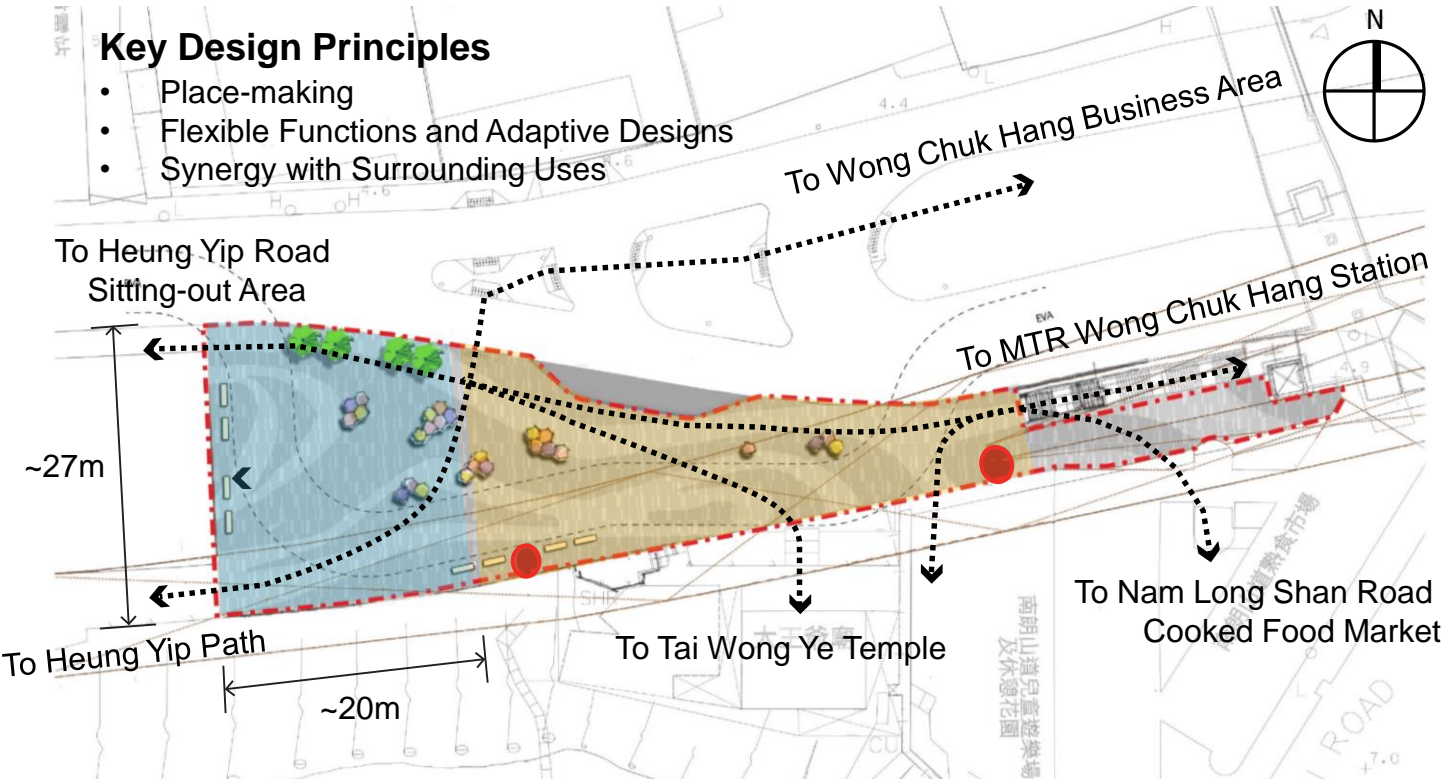


A Vibrant and Welcoming Public “Piazza”

Vision, Design Principles, and Spatial Framework

Key Design Principles

- Place-making
- Flexible Functions and Adaptive Designs
- Synergy with Surrounding Uses



Legend

Proposed Spatial Framework

- Flexible Event Space
- Mobile and Multi-purpose Furniture
- Artistic Visual Anchor
- Pedestrian Circulation
- Public Space next to Tai Wong Ye Temple



Photo Credit : AECOM



Photo Credit : AECOM

Promote Pedestrian Connectivity



Photo Credit : West Kowloon Cultural District Authority



Photo Credit : Hong Kong Tourism Board

Flexible, Vibrant & Eventful Space



Photo Credit : AECOM



Photo Credit : Leisure and Cultural Services Department

Place for Interaction

Preliminary Conceptual Design

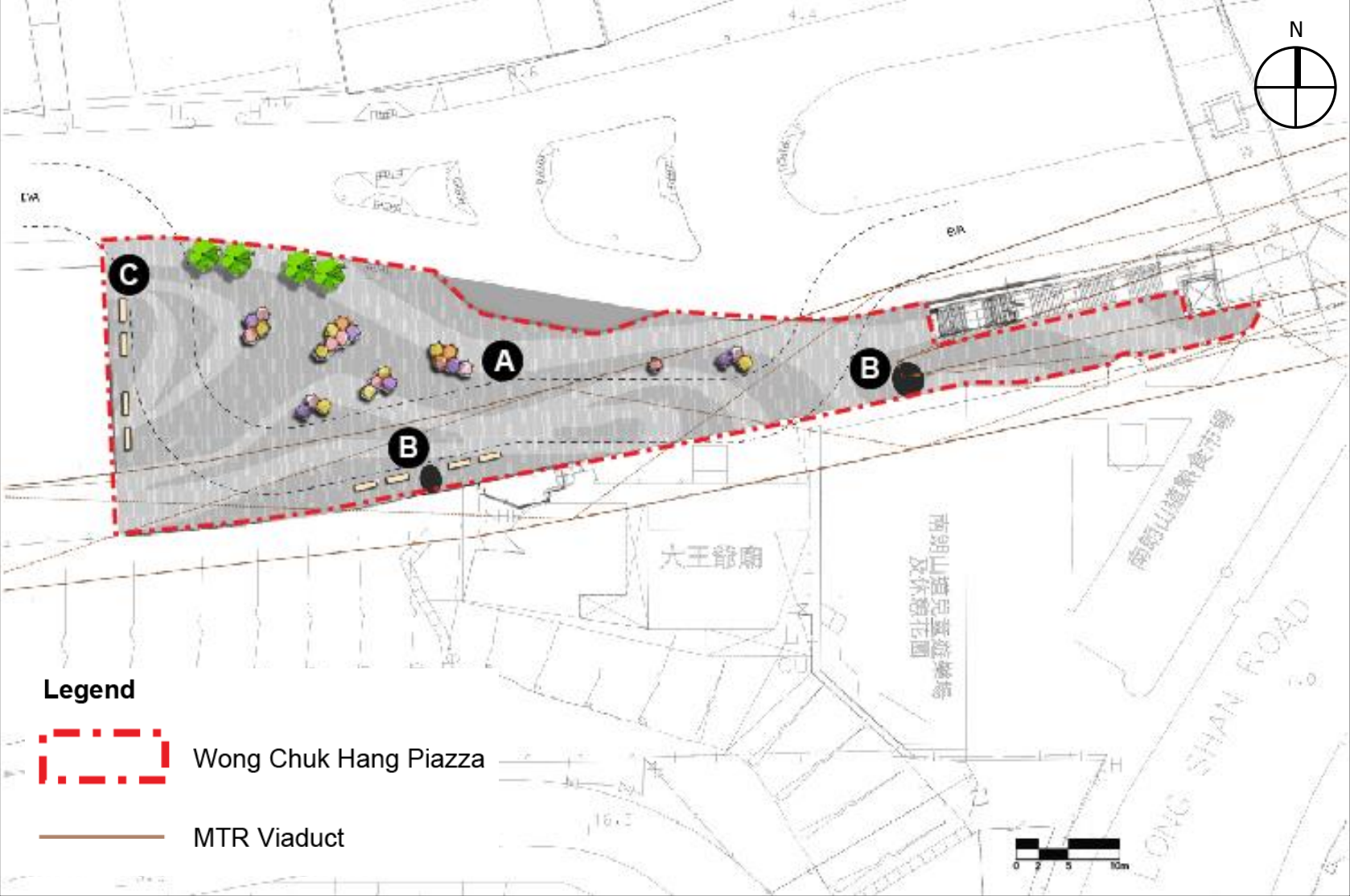


Photo Credit : Energizing Kowloon East Office

A. Mobile and Multi-purpose Furniture



Photo Credit : Development Bureau

B. Artistic Visual Anchor



Photo Credit : Architectural Services Department

C. Social Railing and Benches

Design of the Mobile and Multi-purpose Furniture

