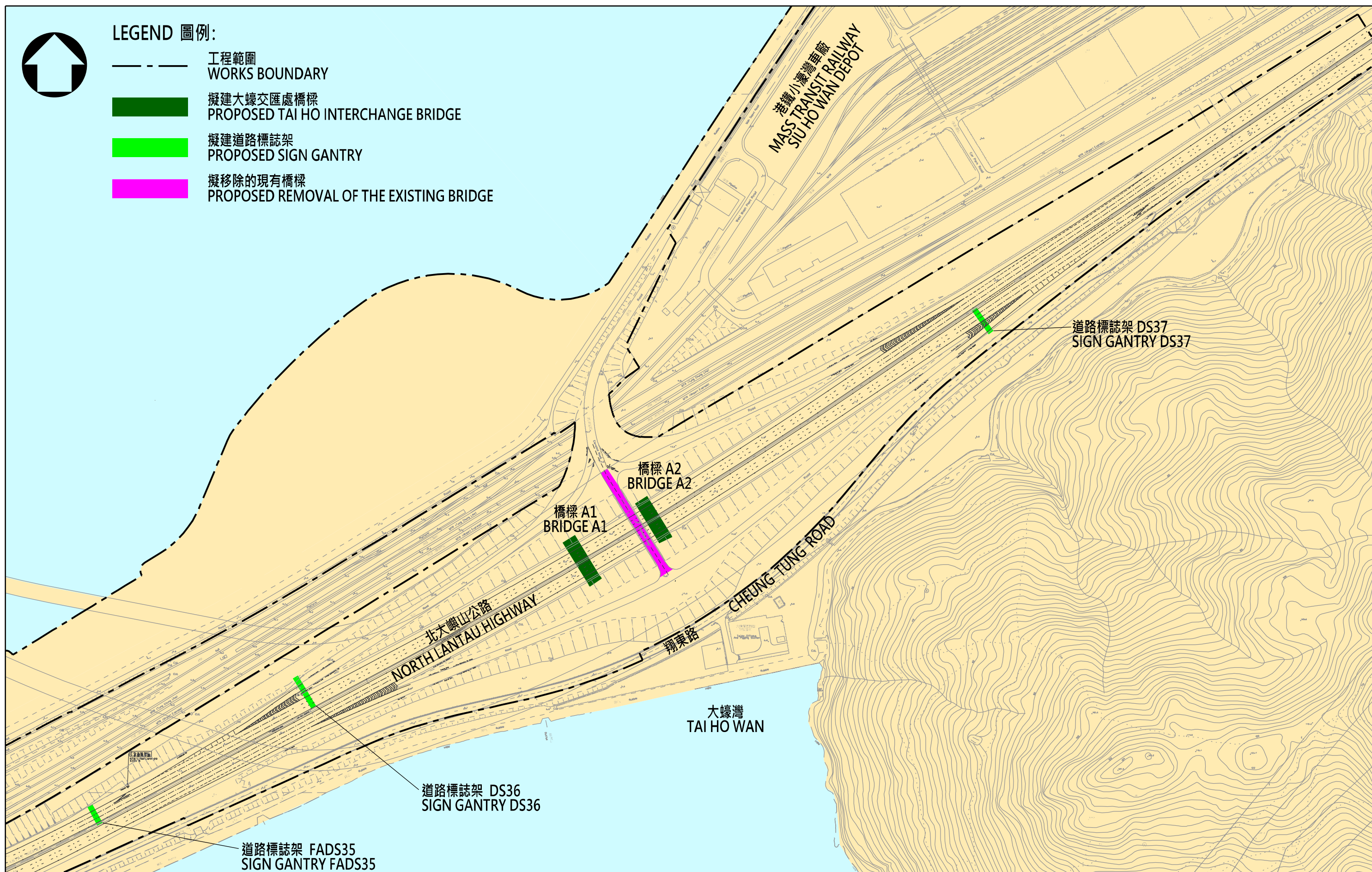


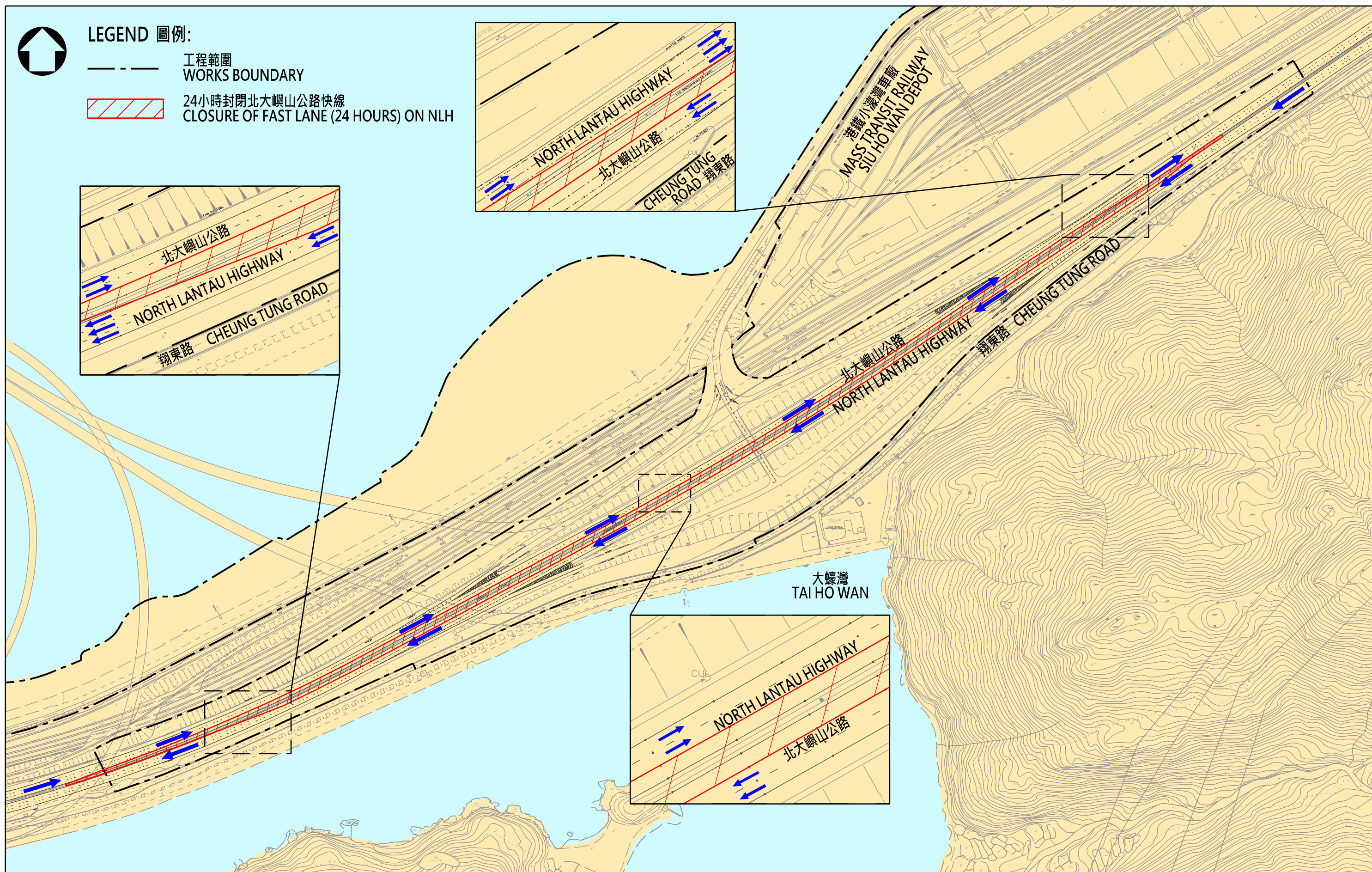
LEGEND 圖例:

-  工程範圍
WORKS BOUNDARY
-  擬建大蠔交匯處橋樑
PROPOSED TAI HO INTERCHANGE BRIDGE
-  擬建道路標誌架
PROPOSED SIGN GANTRY
-  擬移除的現有橋樑
PROPOSED REMOVAL OF THE EXISTING BRIDGE



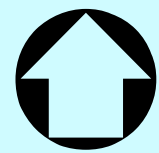
大蠔交匯處橋樑建設及道路標誌架建造工程
BRIDGES AND SIGN GANTRIES CONSTRUCTION AT TAI HO INTERCHANGE

附圖一
FIGURE 1



大蠔交匯處橋樑建設及道路標誌架建造工程的臨時交通安排
 TEMPORARY TRAFFIC ARRANGEMENT FOR BRIDGES AND SIGN GANTRIES CONSTRUCTION AT TAI HO INTERCHANGE

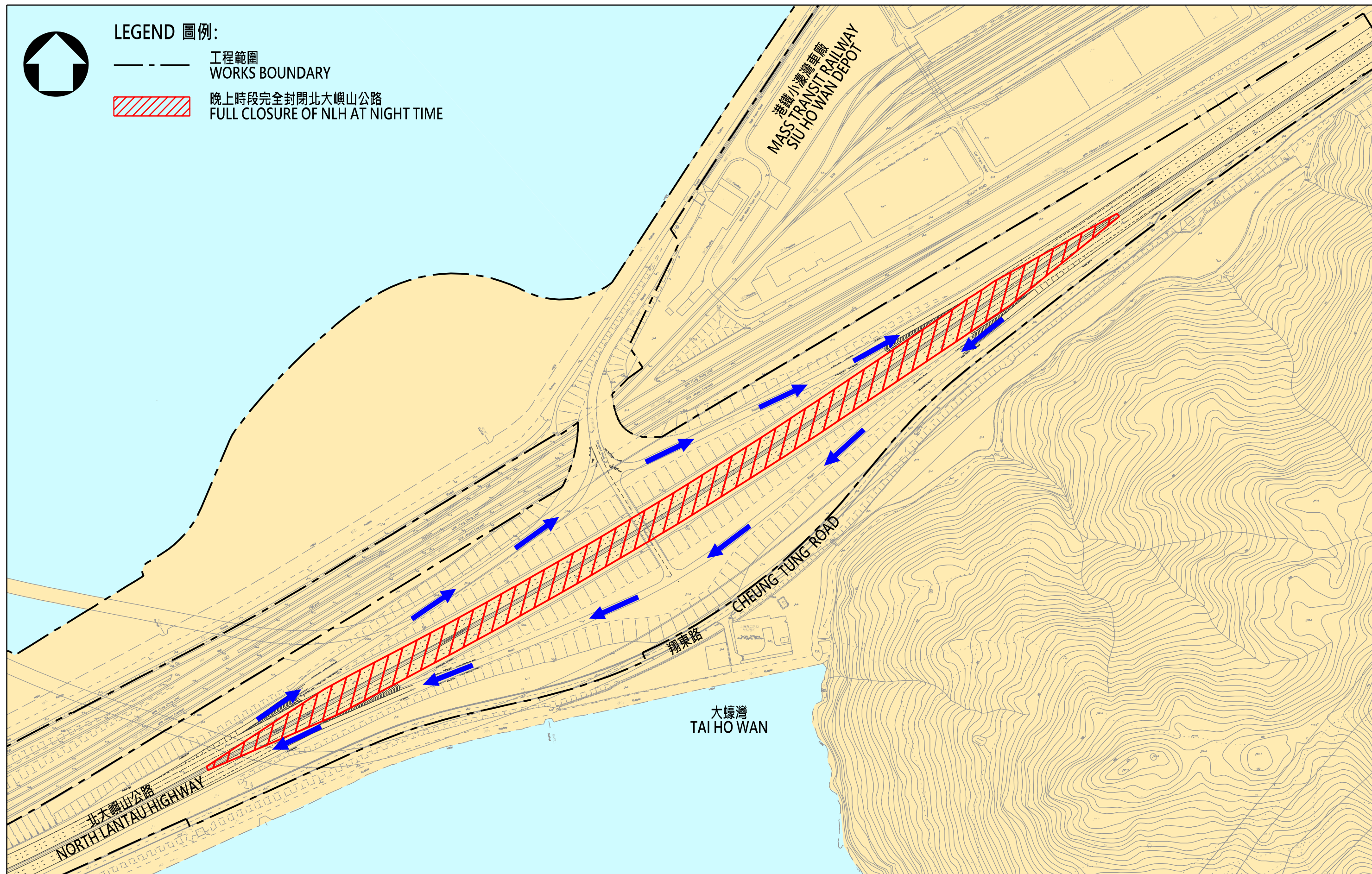
附圖二
 FIGURE 2



LEGEND 圖例:

--- 工程範圍
WORKS BOUNDARY

▨ 晚上時段完全封閉北大嶼山公路
FULL CLOSURE OF NLH AT NIGHT TIME

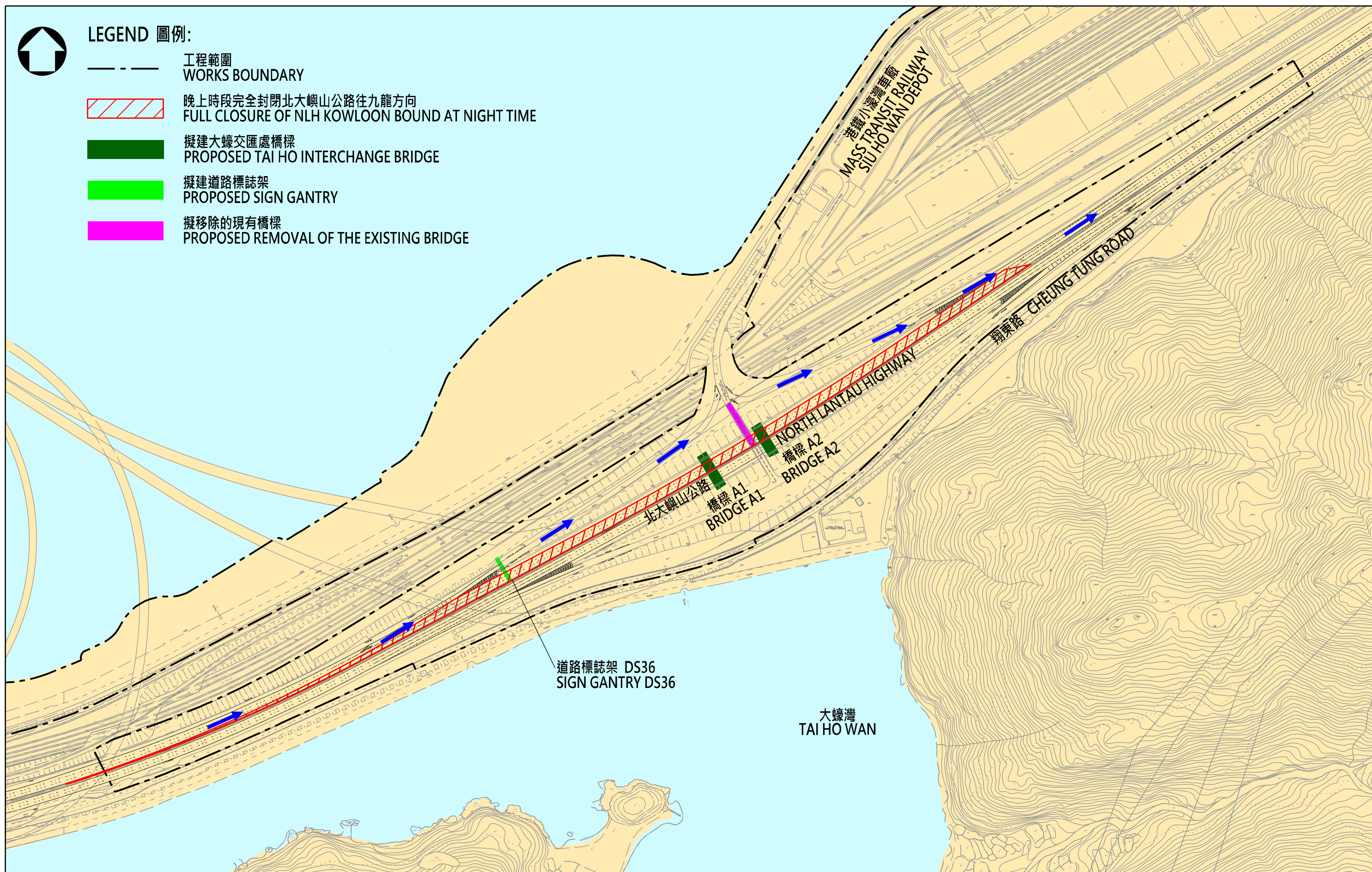


臨時完全封閉北大嶼山公路期間的改道建議

PROPOSED DIVERSION ROUTE DURING FULL CLOSURE OF NORTH LANTAU HIGHWAY AT NIGHT TIME

附圖三

FIGURE 3

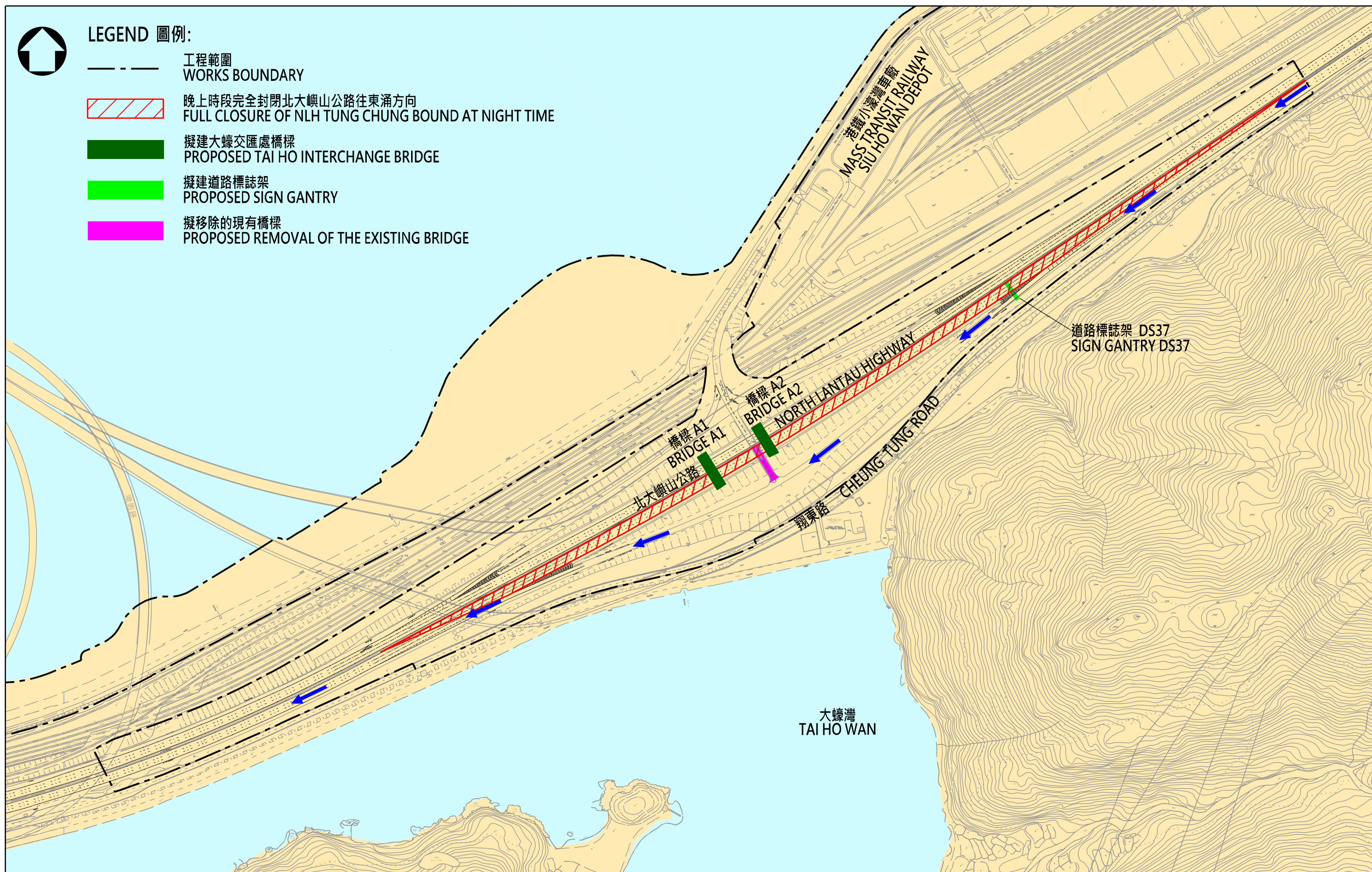


臨時完全封閉北大嶼山公路(九龍方向)期間的改道建議

PROPOSED DIVERSION ROUTE DURING TEMPORARY FULL CLOSURE OF NORTH LANTAU HIGHWAY (KOWLOON BOUND)

附圖 四

FIGURE 4

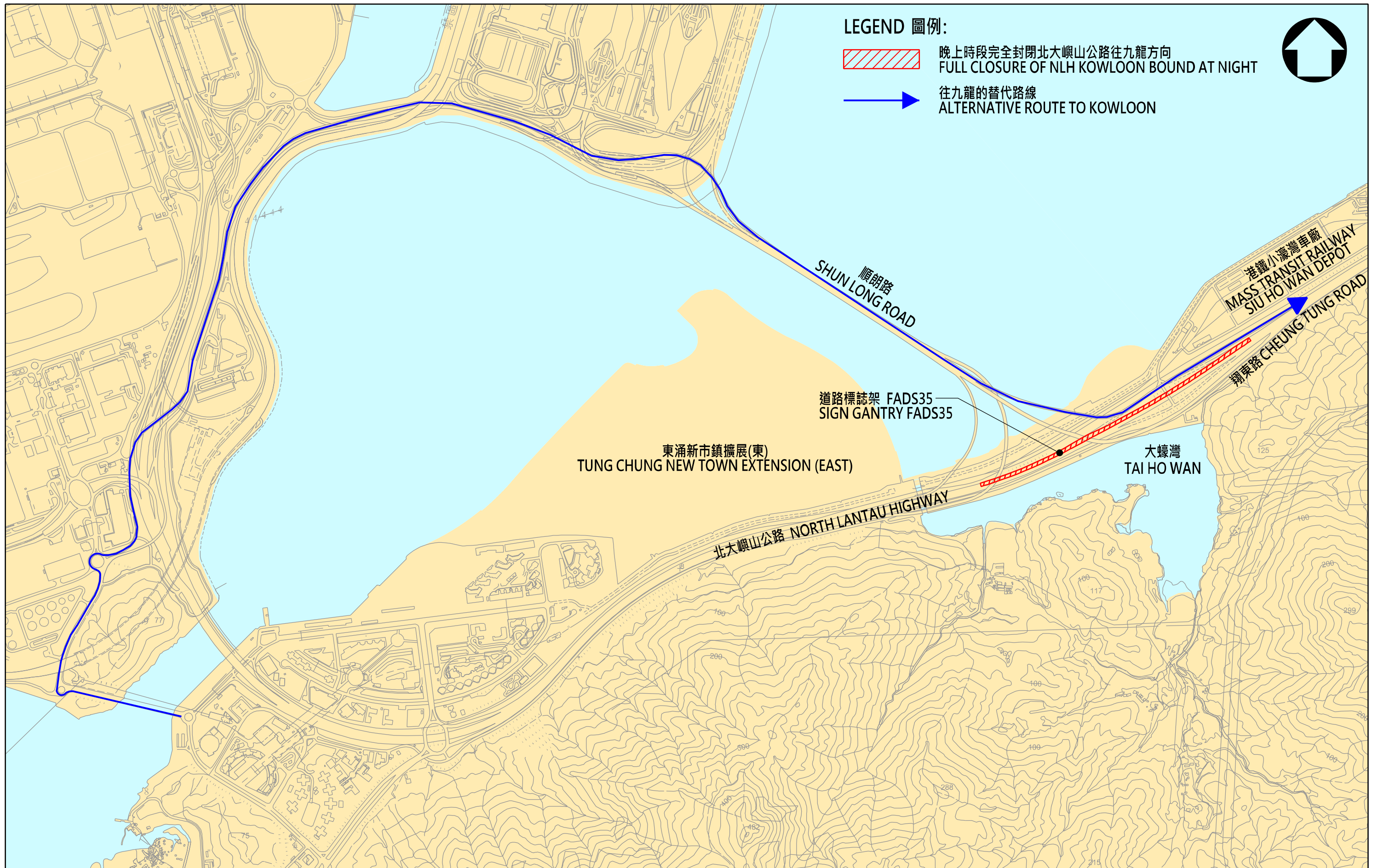


臨時完全封閉北大嶼山公路(東涌方向)期間的改道建議

PROPOSED DIVERSION ROUTE DURING TEMPORARY FULL CLOSURE OF NORTH LANTAU HIGHWAY (TUNG CHUNG BOUND)

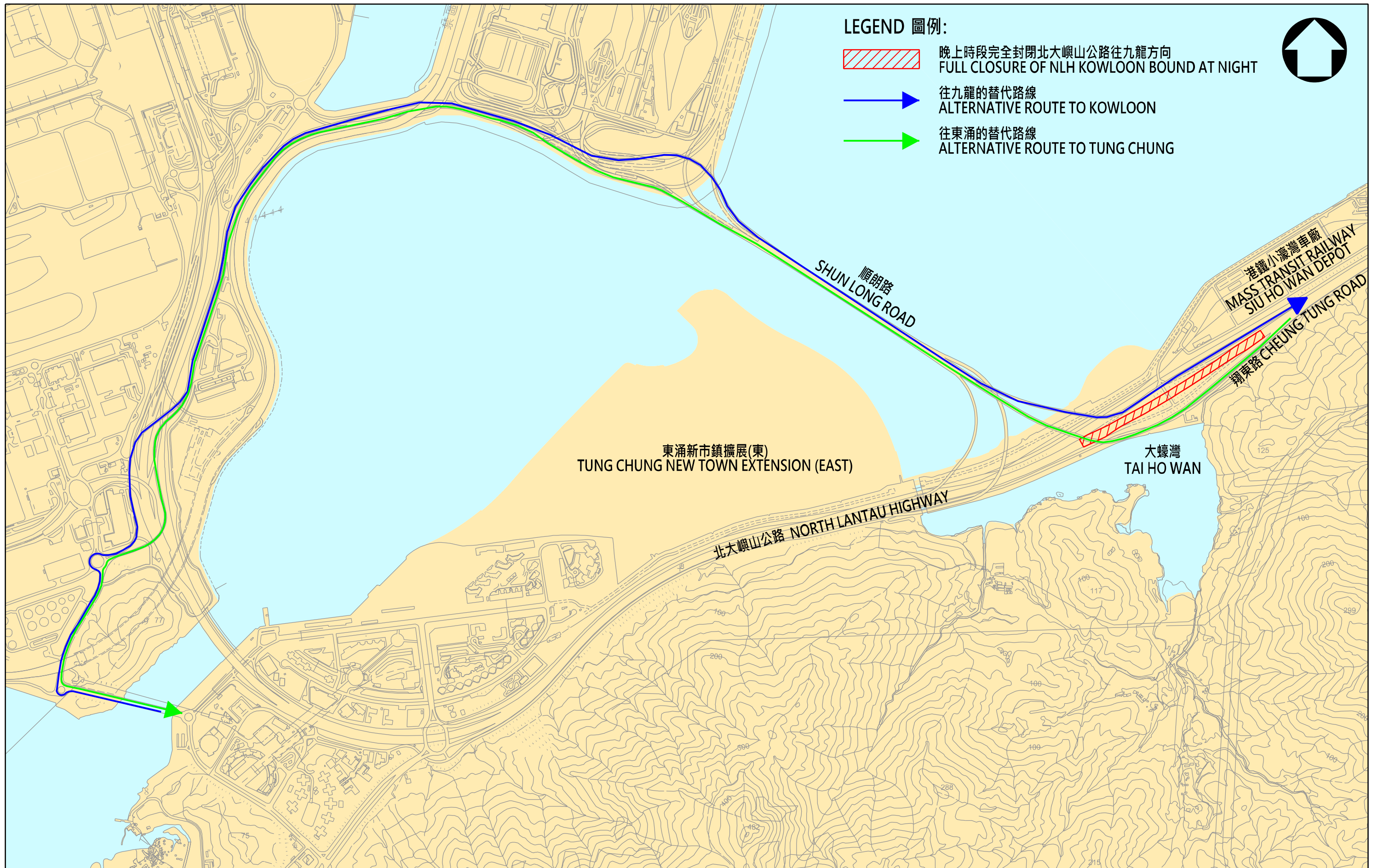
附圖 五

FIGURE 5



臨時完全封閉北大嶼山公路(九龍方向)期間的改道建議
PROPOSED DIVERSION ROUTE DURING TEMPORARY FULL CLOSURE OF NORTH LANTAU HIGHWAY (KOWLOON BOUND)

附圖六
FIGURE 6



往九龍及東涌方向的替代路線
ALTERNATIVE ROUTE TO KOWLOON AND TUNG CHUNG BOUND

附圖七
FIGURE 7