



修訂重建計劃 - 總綱發展藍圖
 REVISED REDEVELOPMENT SCHEME - MASTER LAYOUT PLAN

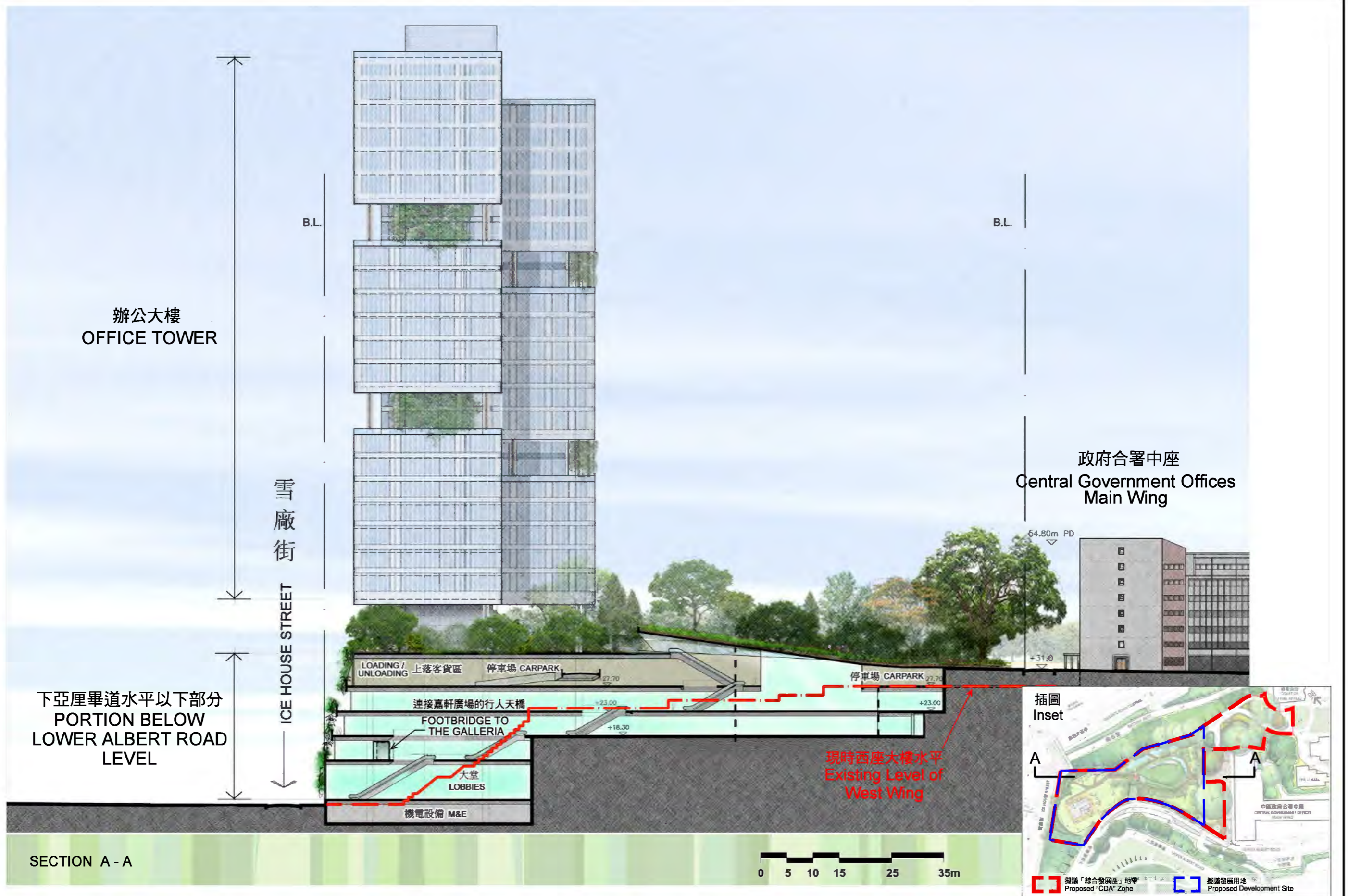
* METRES 20 0 20 40 METRES *

規劃署
 PLANNING DEPARTMENT



M/SD/11/106

圖 Plan 1



本圖於2011年11月14日擬備
PLAN PREPARED ON 14.11.2011

修訂重建計劃 - 剖面圖
REVISED REDEVELOPMENT SCHEME - SECTION PLAN

規劃署
PLANNING DEPARTMENT



M/SD/11/106

圖 Plan 2



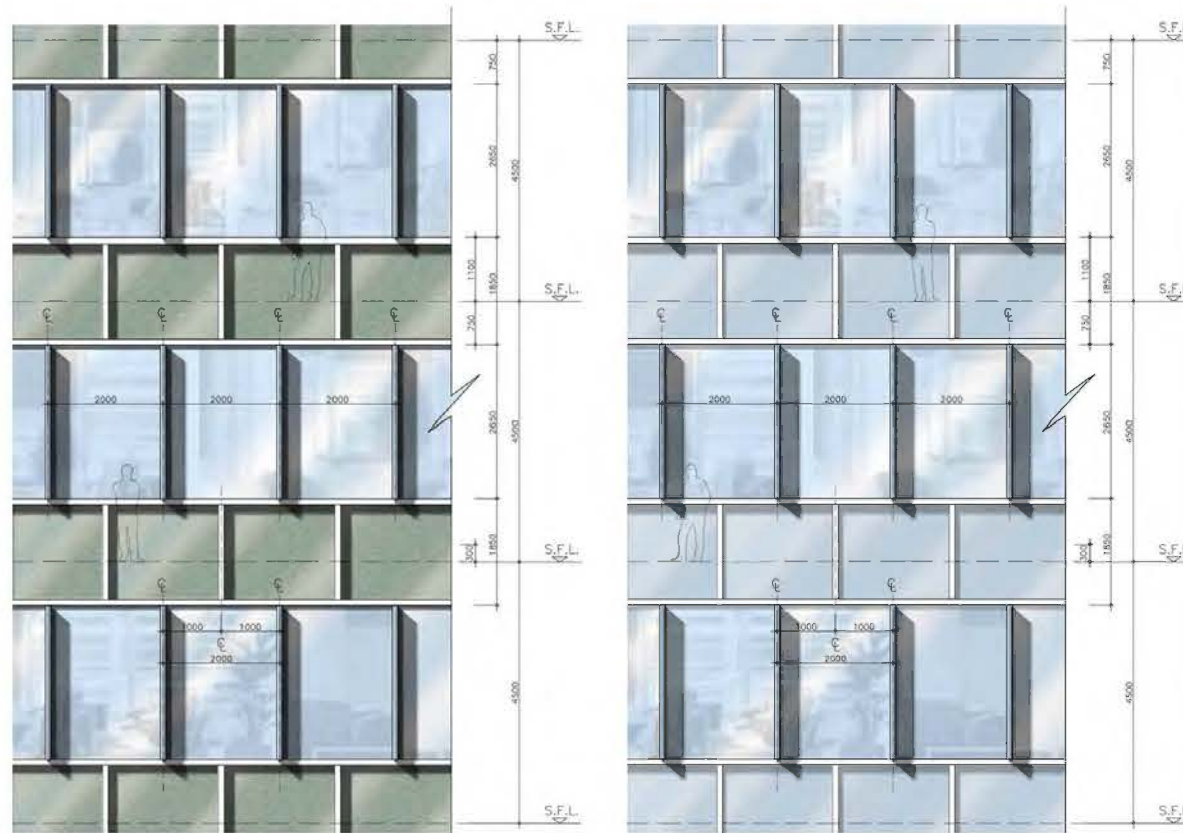
修訂重建計劃 - 在皇后大道中水平的獨立入口大堂 (概念設計)
 REVISED REDEVELOPMENT SCHEME -
 SEPARATE ENTRANCE LOBBIES AT QUEEN'S ROAD CENTRAL LEVEL (INDICATIVE DESIGN)

本圖於2011年11月14日擬備
 PLAN PREPARED ON 14.11.2011



修訂重建計劃 - 下亞厘畢道水平以下部分的標準樓面圖 (概念設計)
 REVISED REDEVELOPMENT SCHEME -
 TYPICAL FLOOR PLAN FOR PORTION BELOW LOWER ALBERT ROAD LEVEL (INDICATIVE DESIGN)

本圖於2011年11月14日擬備
 PLAN PREPARED ON 14.11.2011

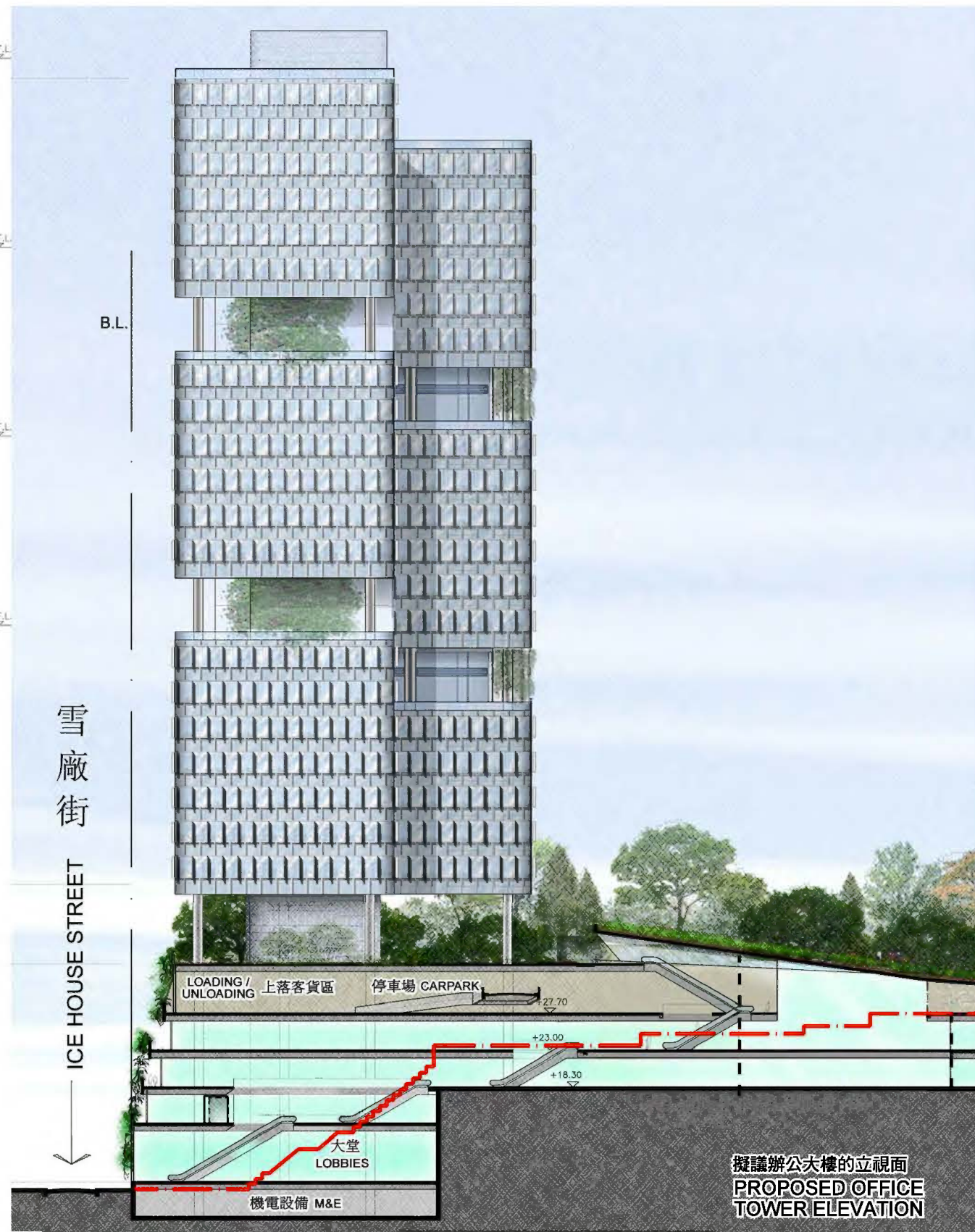


方案1 OPTION 1
可能的辦公大樓外牆設計 POSSIBLE OFFICE TOWER FACADE TREATMENT

方案2 OPTION 2



現時中區政府合署中座的外牆 EXISTING CGO MAIN WING FACADE



擬議辦公大樓的立視面
PROPOSED OFFICE TOWER ELEVATION

修訂重建計劃 - 辦公大樓外牆的可能設計 (概念設計)

REVISED REDEVELOPMENT SCHEME -
POSSIBLE EXTERNAL FACADE DESIGN OF OFFICE TOWER (INDICATIVE DESIGN)

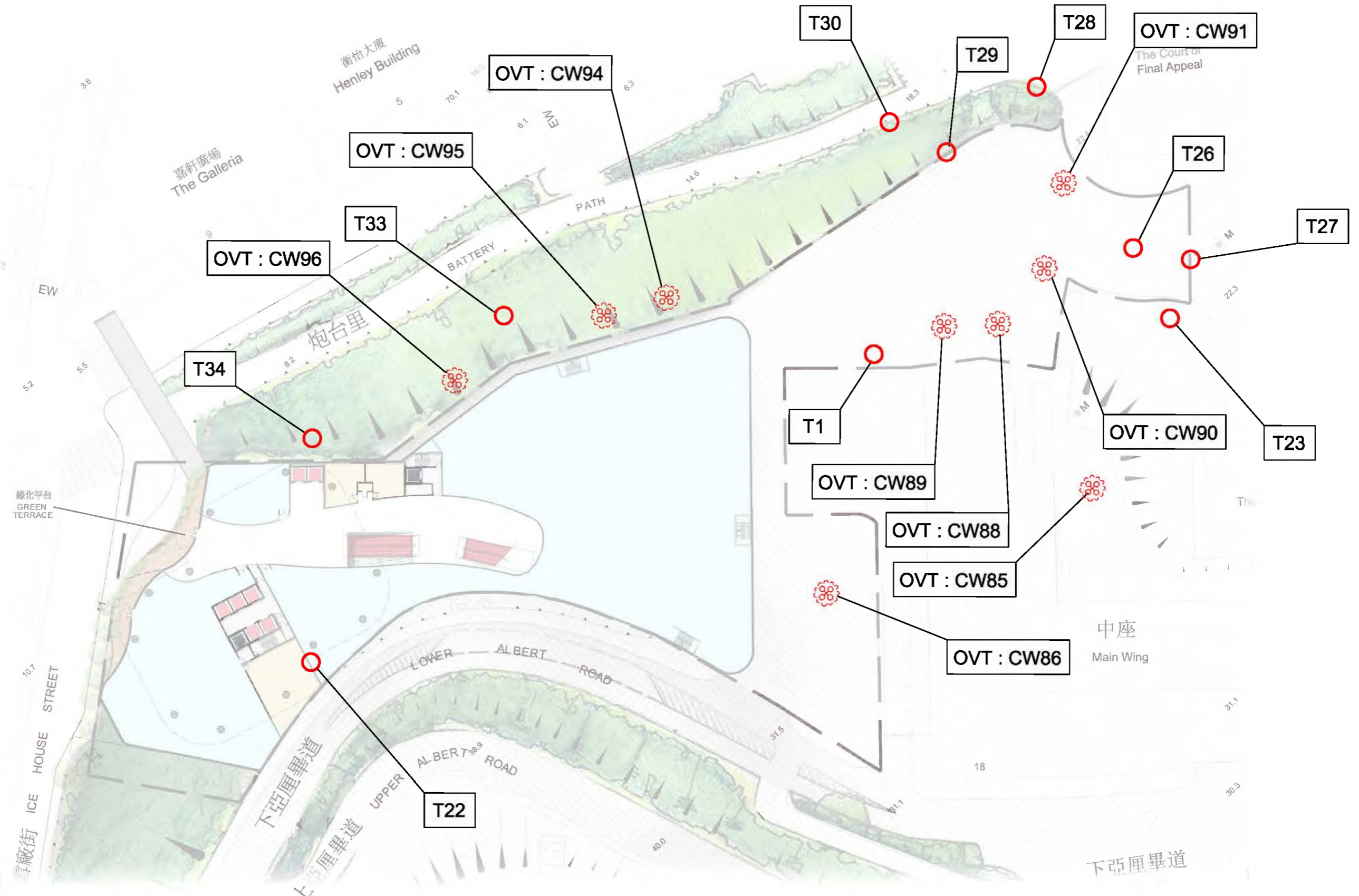
規劃署
PLANNING DEPARTMENT





M/SD/11/106

圖 Plan 5





圖例 LEGEND

-  古樹名木
OLD AND VALUABLE TREE
-  粗壯大樹
SIGNIFICANT SIZED TREE

用地內及附近的古樹名木及粗壯大樹
 OLD AND VALUABLE TREES AND
 SIGNIFICANT SIZED TREES ON AND IN THE VICINITY OF THE SITE

本圖於2011年12月28日擬備
 PLAN PREPARED ON 28.12.2011